

Florida Department of Education



**& Adequate Yearly Progress**

August 2010

## GRADING FLORIDA PUBLIC SCHOOLS 2009-2010

Schools are assigned a grade based primarily upon student achievement data from the FCAT. School grades communicate to the public how well a school is performing relative to state standards. School grades are calculated based on annual learning gains of each student toward achievement of Sunshine State Standards, the progress of the lowest quartile of students, and the meeting of proficiency standards.

**School grades utilize a point system. Schools are awarded one point for each percent of students who score *high on the FCAT and/or make annual learning gains.***

### School Grades

<b>A</b>	<ul style="list-style-type: none"> <li>• 525 points or more</li> <li>• Meet adequate progress of lowest students in reading and math</li> <li>• Test at least 95% of eligible students</li> </ul>
<b>B</b>	<ul style="list-style-type: none"> <li>• 495 points or more</li> <li>• Meet adequate progress of lowest students in reading and math within two years</li> <li>• Test at least 90% of eligible students</li> </ul>
<b>C</b>	<ul style="list-style-type: none"> <li>• 435 points or more</li> <li>• Meet adequate progress of lowest students in reading and math within two years</li> <li>• Test at least 90% of eligible students</li> </ul>
<b>D</b>	<ul style="list-style-type: none"> <li>• 395 points or more</li> <li>• Test at least 90% of eligible students</li> </ul>
<b>F</b>	<ul style="list-style-type: none"> <li>• Fewer than 395 points</li> </ul>

## Scoring High on the FCAT

The Florida Comprehensive Assessment Test (FCAT) is the primary measure of students' achievement of the Sunshine State Standards. Student scores are classified into five achievement levels, with 1 being the lowest and 5 being the highest.

- Schools earn one point for each percent of students who score in achievement levels 3, 4, or 5 in **reading**, one point for each percent of students who score 3, 4, or 5 in **math**, and one point for each percent of students who score 3, 4, or 5 in **science**. If a school does not have science scores, the district average for all students in science will be used.
- The **writing** exam is scored on a scale of 1 to 6. Schools earn one point for the average of the percent of students scoring 3.0 or above and the percent of students scoring 4.0 and above. If a school does not have writing scores, the district average for all students in writing will be used.

## Making Annual Learning Gains

Since FCAT **reading and math** exams are given in grades 3 – 10, it is possible to monitor how much students learn from one year to the next.

- Schools earn one point for each percent of students who make learning gains in reading and one point for each percent of students who make learning gains in math. Students can demonstrate learning gains in any one of three ways:
  - (1) Improve achievement levels from 1-2, 2-3, 3-4, or 4-5; **or**
  - (2) Maintain within the relatively high levels of 3, 4, or 5; **or**
  - (3) Demonstrate more than one year's growth within achievement levels 1 or 2 (does not include retained students).

Special attention is given to the reading and math gains of students in the lowest 25%<sup>1</sup> in levels 1, 2, or 3 in each school. Schools earn one point for each percent of the lowest performing students who make learning gains in reading and math from the previous year. It takes at least 50% to make "adequate progress" for this group. If a school has less than 50% of this group making gains, schools can still make "adequate progress" for the group if they demonstrate improvement over the prior year.

## Bonus Points for 11<sup>th</sup> and 12<sup>th</sup> Grade Retakes

High schools can earn 10 bonus points if at least 50% of their 11<sup>th</sup> and 12<sup>th</sup> grade students pass the FCAT retake in reading and math.

## Which students are included in school grade calculations?

As in previous years, only standard curriculum students (including Speech impaired, gifted, hospital/homebound, and limited English proficient students (LEP) with more than two years in an ESOL program) enrolled in the same school in both October and February are included in the components for scoring high on the FCAT. All students, including students with disabilities (SWD) and LEP students, are included in the learning gains component of the school grade calculation.

## What happens if the lowest performing students in the school do not make "adequate progress" in reading and math?

If a school, otherwise graded "C" or "B", does not demonstrate adequate progress in either the current or prior year, the final grade will be reduced by one letter grade. If a school, otherwise graded "A", does not demonstrate adequate progress in the current year, the final grade will be reduced by one letter grade.

<sup>1</sup> For schools with fewer than 30 students in the lowest 25%, the 30 lowest performing students will be substituted.

## School Improvement Ratings for Alternative Schools

Alternative Schools that provide dropout prevention and academic intervention services have the option of receiving a school grade or a school improvement rating (Section 1008.34, Florida Statutes). If an alternative school chooses to receive a school improvement rating, the performance of the students at the alternative school are included in the calculation of the rating and the school grade of the students’ home school.

### Improvement Rating Designations

<b>Improving</b>	<ul style="list-style-type: none"> <li>• Students attending the alternative school are making more academic progress than when the students were served in their home schools.</li> <li>• Percent of students making learning gains in both reading and mathematics in the current year must be <u>at least five (5) percentage points</u> higher than the percent of the same students making learning gains in reading and in mathematics in the prior year.</li> <li>• Test at least 90% of eligible students.</li> </ul>
<b>Maintaining</b>	<ul style="list-style-type: none"> <li>• Students attending the alternative school are making progress equivalent to the progress made when the students were served in their home schools.</li> <li>• Percent of students making learning gains in both reading and mathematics in the current year must be <u>less than five (5) percentage points above or below</u> the percent of the same students making learning gains in reading and in mathematics in the prior year.</li> <li>• Test at least 90% of eligible students.</li> </ul>
<b>Declining</b>	<ul style="list-style-type: none"> <li>• Students attending the alternative school are making less academic progress than when the students were served in their home schools.</li> <li>• Percent of students making learning gains in either reading or mathematics in the current year must be <u>at least five (5) percentage points lower</u> than the percent of the same students making learning gains in reading and in mathematics in the prior year.</li> <li>• Test at least 90% of eligible students.</li> </ul>

Since ratings are dependent on progress in both reading and mathematics, a school’s rating can be no higher than the status of the learning gains comparison for its lowest performing subject. For example, if a school is assigned a “maintaining” status for reading, but a “declining” status for mathematics, the school’s overall would be “declining.”

## Grading Florida's High Schools in 2009-10 (To be Released Later this Year)

### 50% of Grade Based on FCAT & Learning Gains, 50% Based on New Non-FCAT Components

As established in s. 1008.34, F.S., Florida's high schools are graded using the FCAT and learning gains components described on the previous page (worth 800 points), plus several non-FCAT based components that account for 50 percent of the high school grade (also worth 800 points). The non-FCAT-based grading components include the following measures (note that measures counting for more than 100 points are double-weighted):

- Graduation rate – the percentage of students graduating with a standard or special diploma within four years of initial enrollment in grade 9, adjusting for transfers. [200 points]
- Graduation rate of at-risk students. Students are identified as at-risk if they score no higher than level 2 on the grade 8 FCAT in both reading and math. [100 points]
- Accelerated curriculum participation for students in grades 9 – 12, based on exams taken for AP, IB, AICE, and industry certification, as well as dual enrollment course enrollments. This component measures the combined weighted student participation count divided by the membership count of students in grades 11-12. Students in grades 9 and 10 may only be included as participants if they have successful completions (passing test scores, or, for dual enrollment, passing course grades of “C” or higher). [200 points]
- Accelerated curriculum performance – the measure of successful completions in accelerated curricula (as described above) divided by the weighted count of accelerated coursework participants. [100 points]
- Postsecondary readiness of students in reading and in math (calculated separately for each subject) as measured by the SAT, ACT, or the CPT. [100 points, Math; 100 points, Reading]
- Growth or decline in the data components of these measures from year to year. Schools that demonstrate an annual increase in their component points receive additional points based on the annual increase in points, up to 20 points per component (up to 40 points for components worth 200 points). Schools lose five points for this component if performance declines by 10 or more percentage points annually (with up to ten points subtracted for component worth 200 points).
- Additionally, to receive an “A”, high schools that would otherwise earn an “A” on points must meet a statewide target of 75% for the graduation rate of at-risk students or show sufficient annual improvement in that rate to qualify for a grade of “A.” Sufficient annual improvement = 1% or more for schools that have an at-risk graduation rate of at least 65%. Schools that have an at-risk graduation rate of below 65% must show at least a 5% annual increase in the rate to meet this requirement.

### Grade Scale for High Schools and Combination Schools (Based on a 1600-Point Scale)

A = At least 1,050 points, B = 990 to 1,049 points, C = 870 to 989 points, D = 790 to 869 points, F = Fewer than 790 points.

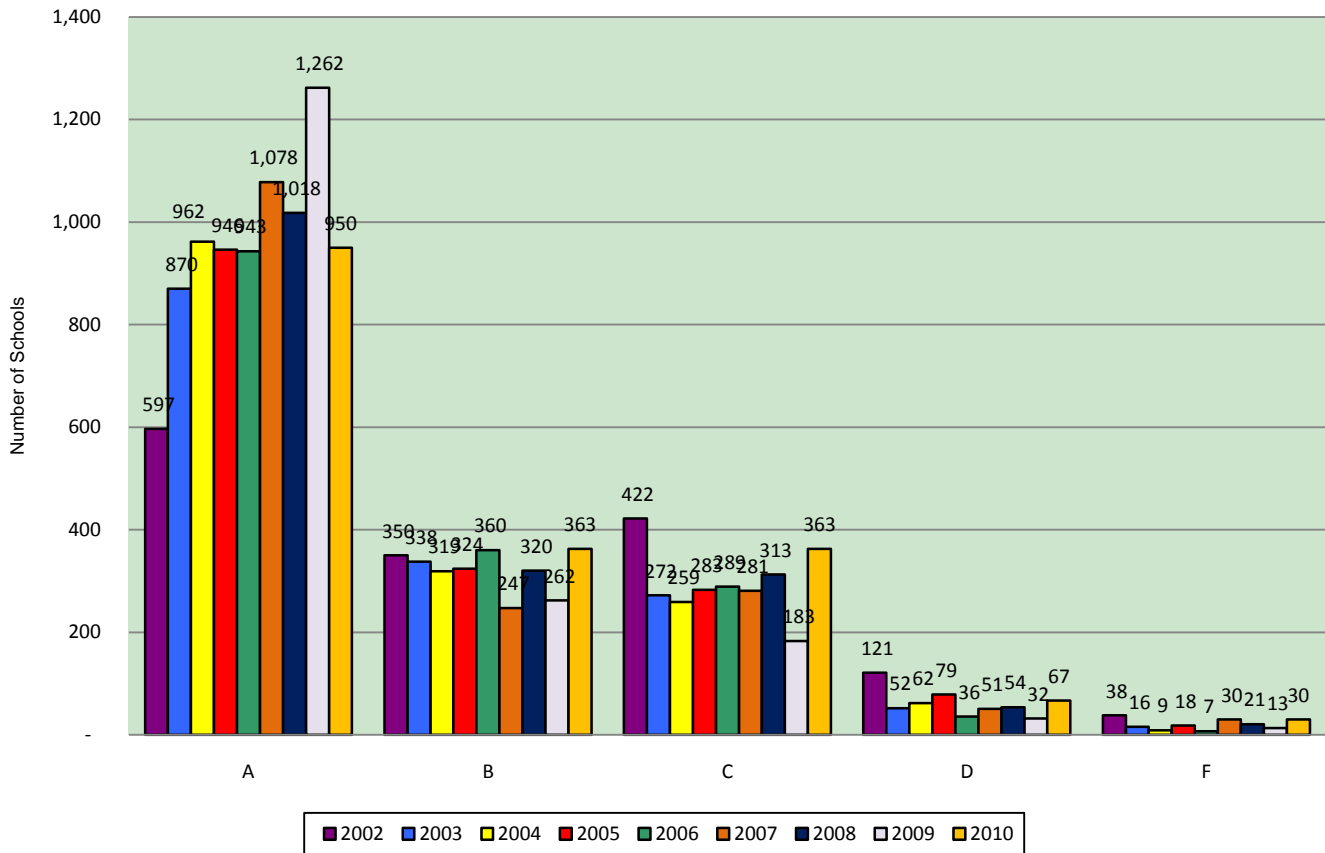
(High schools must also meet the same requirements as elementary/middle schools for percent tested and adequate progress of the low 25% in reading and math.)

### Grading Combination Schools (Weighting Factors)

K-12 schools: FCAT components = 80% of grade. Non-FCAT components = 20% of grade.

6-12 schools: FCAT components = 70% of grade. Non-FCAT components = 30% of grade.

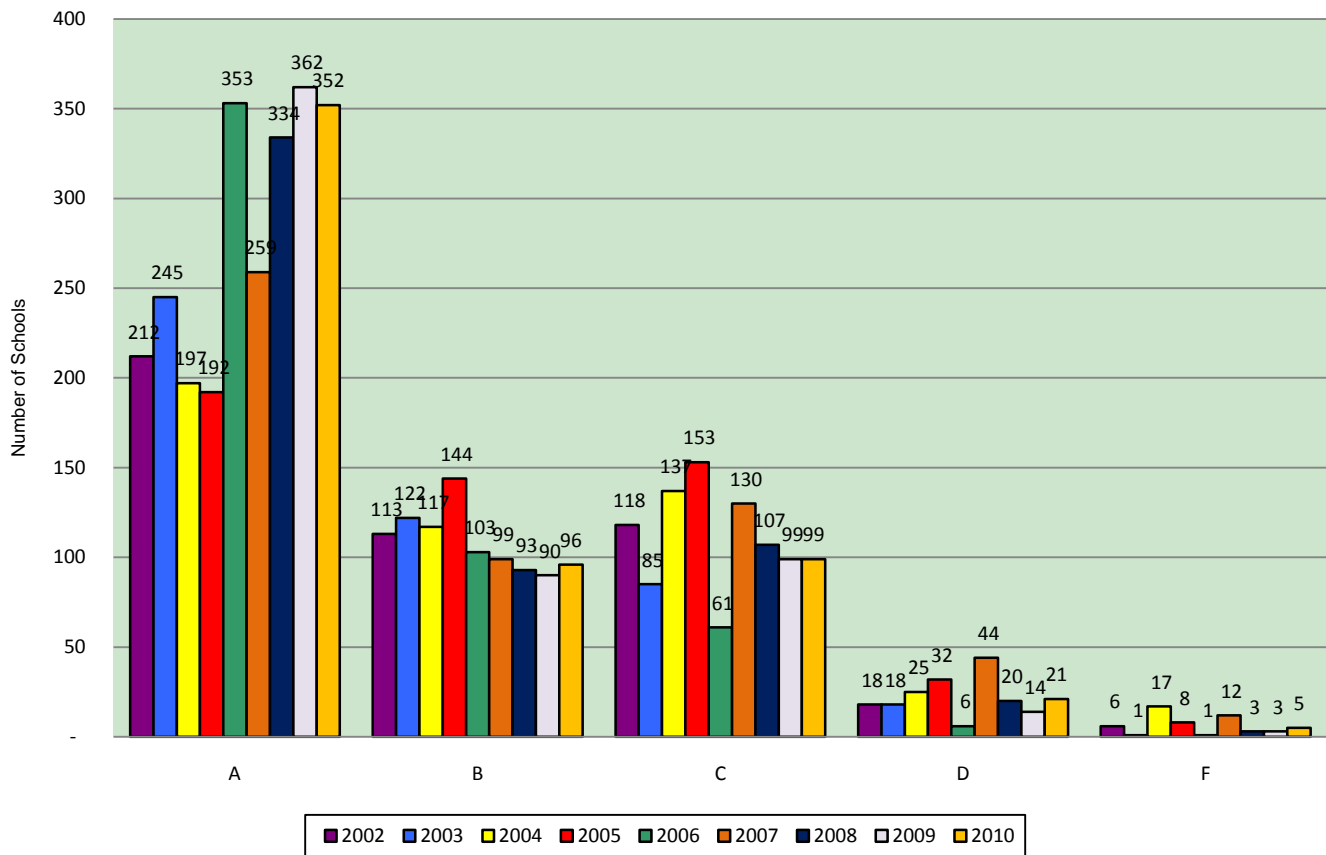
## School Grades – Elementary Schools 2002 – 2010



Since 2002, the number of elementary schools earning "A" school grades has increased to 950 in 2010 from 597 in 2002, 870 in 2003, decreased from 962 in 2004, increased from 946 in 2005, increased from 943 in 2006, decreased from 1,078 in 2007, 1,018 in 2008, and 1,262 in 2009. The number of elementary schools earning "B" school grades has increased to 363 in 2010 from 350 in 2002, 338 in 2003, 319 in 2004, 324 in 2005, is equal to 360 in 2006, increased from 247 in 2007, 320 in 2008, and 262 in 2009. The number of elementary schools earning "C" school grades has decreased to 363 in 2010 from 422 in 2002, increased from 272 in 2003, 259 in 2004, 283 in 2005, 289 in 2006, 281 in 2007, 313 in 2008, and 183 in 2009. The number of elementary schools earning "D" school grades has decreased to 67 in 2010 from 121 in 2002, increased from 52 in 2003, 62 in 2004, decreased from 79 in 2005, increased from 36 in 2006, 51 in 2007, 54 in 2008, and 32 in 2009. The number of elementary schools earning "F" school grades has decreased to 30 in 2010 from 38 in 2002, increased from 16 in 2003, 9 in 2004, 18 in 2005, 7 in 2006, is equal to 30 in 2007, increased from 21 in 2008, and 13 in 2009.

Source: Florida Department of Education

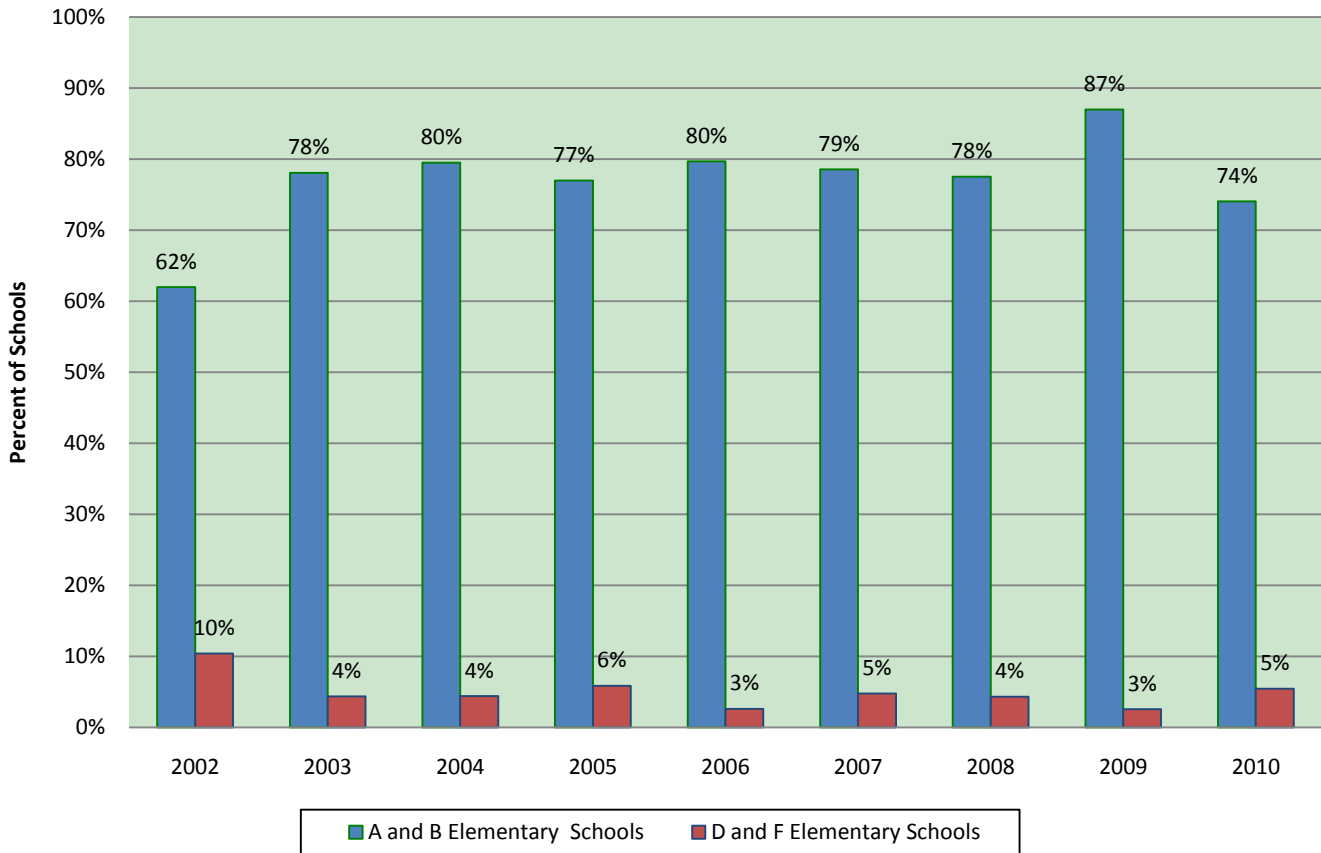
## School Grades – Middle Schools 2002 – 2010



Since 2002, the number of middle schools earning "A" school grades has increased to 352 in 2010 from 212 in 2002, 245 in 2003, 197 in 2004, 192 in 2005, decreased from 353 in 2006, increased from 259 in 2007, 334 in 2008, and decreased from 362 in 2009. The number of middle schools earning "B" school grades has decreased to 96 in 2010 from 113 in 2002, 122 in 2003, 117 in 2004, 144 in 2005, 103 in 2006, 99 in 2007, increased from 93 in 2008, and 90 in 2009. The number of middle schools earning "C" school grades has decreased to 99 in 2010 from 118 in 2002, increased from 85 in 2003, decreased from 137 in 2004, 153 in 2005, increased from 61 in 2006, decreased from 130 in 2007, 107 in 2008, and is equal to 99 in 2009. The number of middle schools earning "D" school grades has increased to 21 in 2010 from 18 in 2002, 18 in 2003, decreased from 25 in 2004, 32 in 2005, increased from 6 in 2006, decreased from 44 in 2007, increased from 20 in 2008, and 14 in 2009. The number of middle schools earning "F" school grades has decreased to 5 in 2010 from 6 in 2002, increased from 1 in 2003, decreased from 17 in 2004, 8 in 2005, increased from 1 in 2006, decreased from 12 in 2007, increased from 3 in 2008, and 3 in 2009.

Source: Florida Department of Education

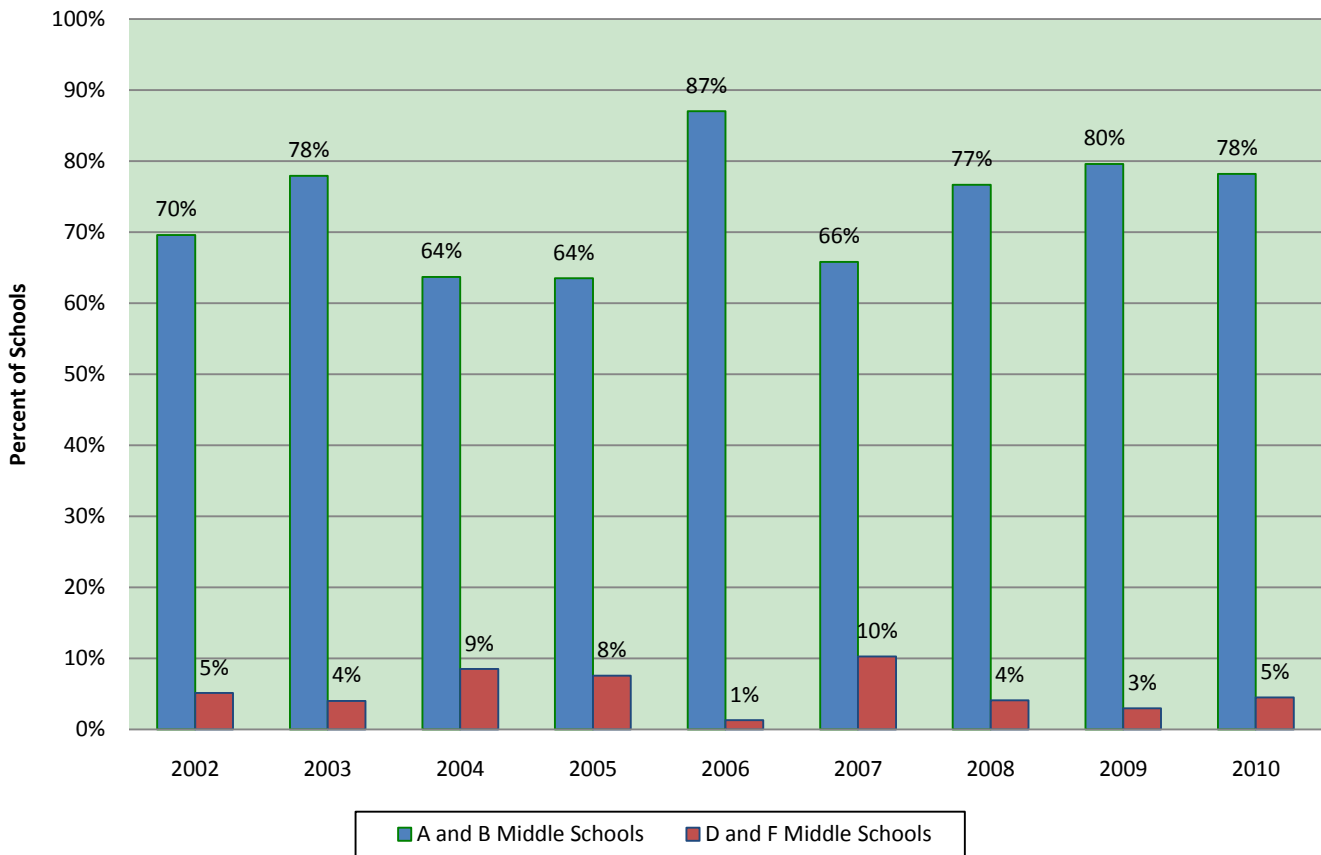
## School Grades – Elementary Schools 2002 – 2010



In 2010, 74% of elementary schools earned an “A” or a “B” school grade. This was an increase from 62% in 2002, a decrease from 78% in 2003, 80% in 2004, 77% in 2005, 80% in 2006, 79% in 2007, 78% in 2008, and 87% in 2009. In 2010, 5% of elementary schools earned a “D” or an “F” school grade. This is a decrease from 10% in 2002, an increase from 4% in 2003, 4% in 2004, a decrease from 6% in 2005, an increase from 3% in 2006, is equal to 5% in 2007, an increase from 4% in 2008, and 3% in 2009.

Source: Florida Department of Education

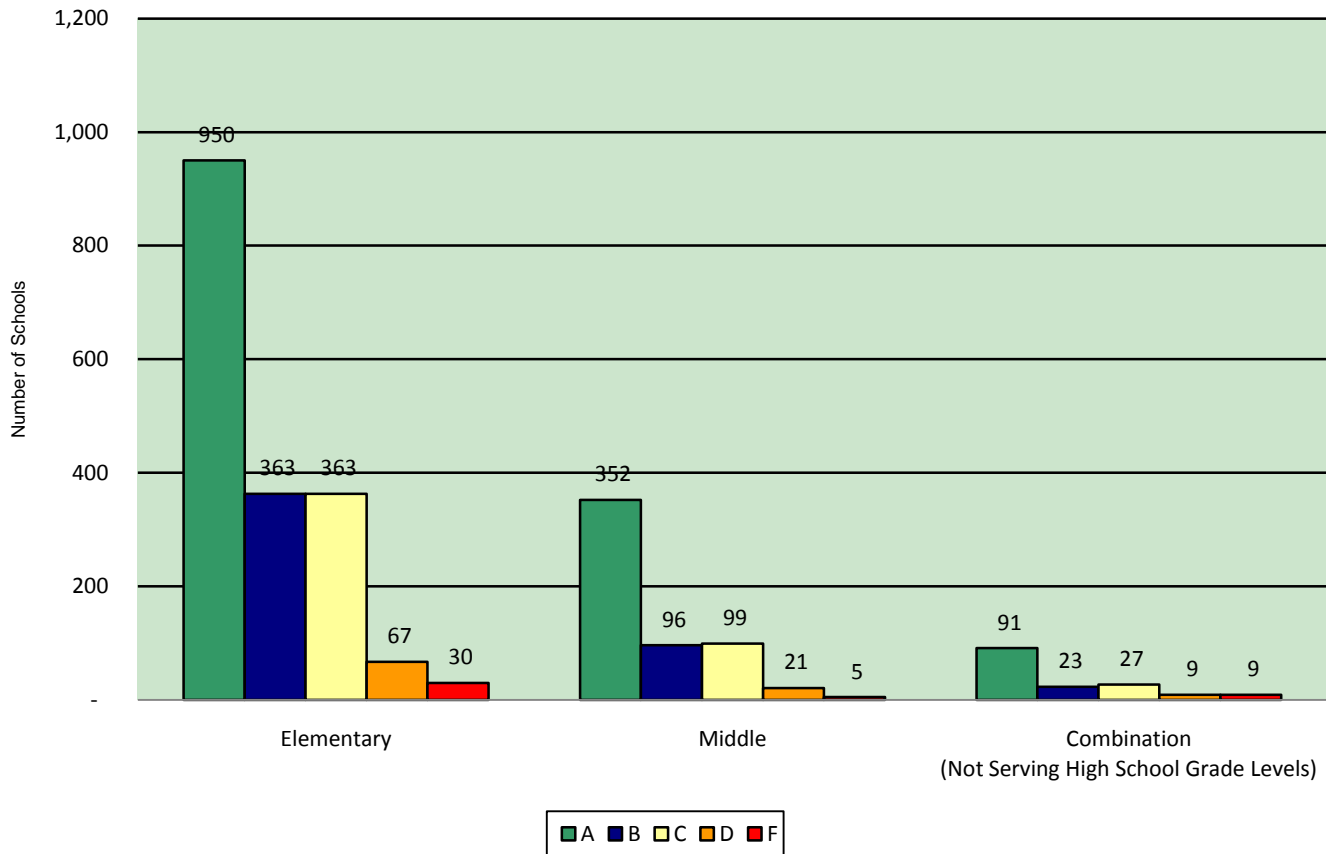
## School Grades – Middle Schools 2002 – 2010



In 2010, 78% of middle schools earned an “A” or a “B” school grade. This was an increase from 70% in 2002, is equal to 78% in 2003, an increase from 64% in 2004, 64% in 2005, a decrease from 87% in 2006, an increase from 66% in 2007, 77% in 2008, and a decrease from 80% in 2009. In 2010, 5% of middle schools earned a "D" or an "F" school grade. This is equal to 5% in 2002, an increase from 4% in 2003, a decrease from 9% in 2004, 8% in 2005, an increase from 1% in 2006, a decrease from 10% in 2007, an increase from 4% in 2008, and 3% in 2009.

Source: Florida Department of Education

## School Grades by School Type 2010



In 2010, there were 950 elementary schools, 352 middle schools, and 91 combination schools (not serving high school grade levels) that earned an "A" school letter grade; 363 elementary schools, 96 middle schools, and 91 combination schools (not serving high school grade levels) that earned a "B" school letter grade; 363 elementary schools, 99 middle schools, and 27 combination schools (not serving high school grade levels) that earned a "C" school letter grade; 67 elementary schools, 21 middle schools, and 9 combination schools (not serving high school grade levels) that earned a "D" school letter grade; and 30 elementary schools, 5 middle schools, and 9 combination schools (not serving high school grade levels) that earned an "F" school letter grade.

\*In addition, there were 25 high schools statewide that did not serve 12<sup>th</sup> grade students in 2009-10. These schools are not eligible for the new high school grading system. Of these schools, 6 earned an "A", 9 earned a "B", 6 earned a "C", and 4 earned a "D".

Source: Florida Department of Education

## 2010 School Grades Compared to 2009 – Elementary Schools

		2010 School Grade				
		A	B	C	D	F
2009 School Grade	A	850	249	138	9	4
	B	59	74	109	16	4
	C	20	27	91	30	12
	D	3	5	13	6	4
	F	2	1	2	5	2

In 2010, 850 elementary schools maintained an "A" school grade, 74 elementary schools maintained a "B" school grade, 91 elementary schools maintained a "C" school grade, 6 elementary schools maintained a "D" school grade, and 2 elementary schools maintained an "F" school grade. There were 249 elementary schools that dropped from an "A" to a "B", 138 elementary schools dropped from an "A" to a "C", 9 elementary schools dropped from an "A" to a "D" and 4 elementary schools dropped from an "A" to an "F". There were 59 elementary schools that improved from a "B" to a "A", 109 elementary schools dropped from a "B" to a "C", 16 elementary schools dropped from a "B" to a "D", and 4 elementary schools dropped from a "B" to an "F". There were 20 elementary schools that improved from a "C" to an "A", 27 elementary schools that improved from a "C" to a "B", 30 elementary schools that dropped from a "C" to a "D", and 12 elementary schools that dropped from a "C" to an "F". There were 3 elementary schools that improved from a "D" to an "A", 5 elementary schools that improved from a "D" to a "B", 13 elementary schools that improved from a "D" to a "C", and 4 elementary schools that dropped from a "D" to an "F". There were 2 elementary schools that improved from an "F" to an "A", 1 elementary school that improved from an "F" to a "B", 2 elementary schools that improved from an "F" to a "C", and 5 elementary schools that improved from an "F" to a "D".

Source: Florida Department of Education

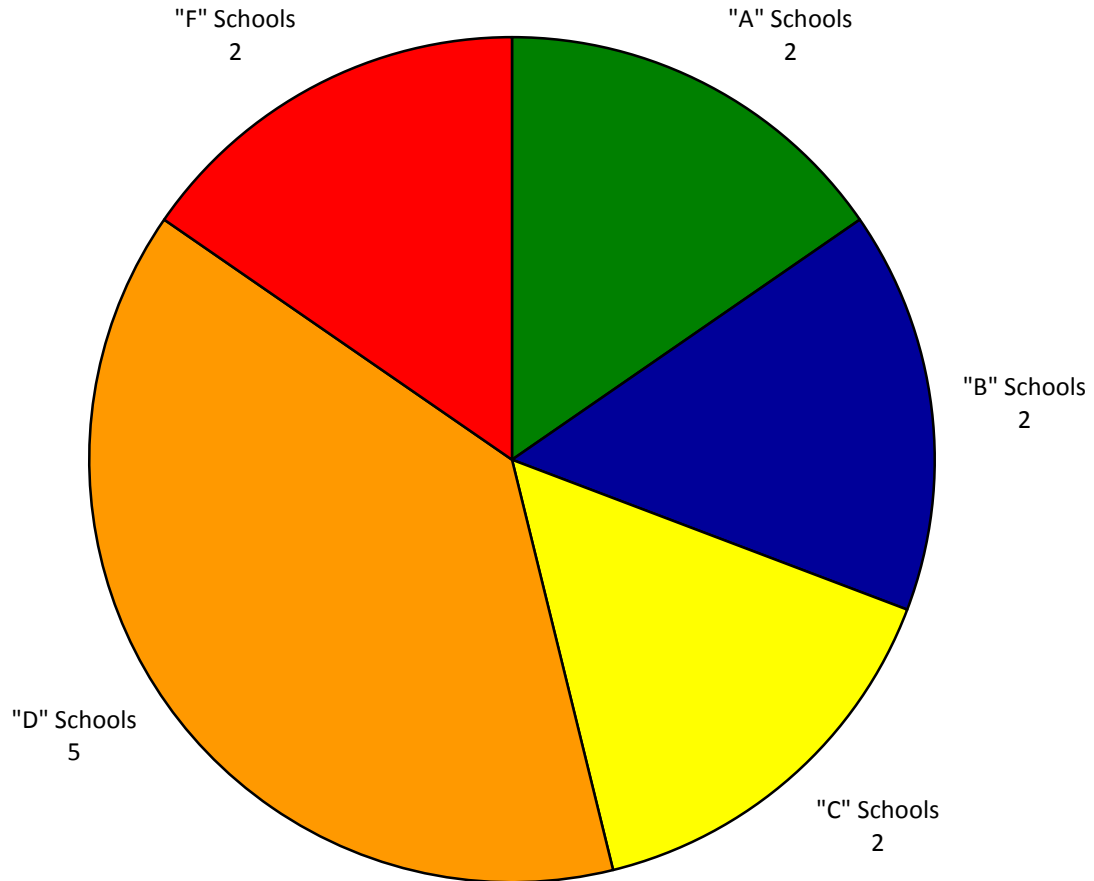
## 2010 School Grades Compared to 2009 – Middle Schools

		2010 School Grade				
		A	B	C	D	F
2009 School Grade	A	323	32	6	1	1
	B	22	41	21	2	1
	C	1	20	66	10	1
	D	1	0	5	6	1
	F	0	1	0	0	0

In 2010, 323 middle schools maintained an "A" school grade, 41 middle schools maintained a "B" school grade, 66 middle schools maintained a "C" school grade, 6 middle schools maintained a "D" school grade, and no middle schools maintained an "F" school grade. There were 32 middle schools that dropped from an "A" to a "B", 6 middle schools dropped from an "A" to a "C", 1 middle school dropped from an "A" to a "D", and 1 school dropped from an "A" to an "F". There were 22 middle schools that improved from a "B" to a "A", 21 middle schools dropped from a "B" to a "C", 2 middle schools dropped from a "B" to a "D", and 1 middle school dropped from a "B" to an "F". There was 1 middle school that improved from a "C" to an "A", 20 middle schools that improved from a "C" to a "B", 10 middle schools that dropped from a "C" to a "D", and 1 middle school that dropped from a "C" to an "F". There was 1 middle school that improved from a "D" to an "A", no middle schools that improved from a "D" to a "B", 5 middle schools that improved from a "D" to a "C", and 1 middle school that dropped from a "D" to an "F". There were no middle schools that improved from an "F" to an "A", 1 middle school that improved from an "F" to a "B", no middle schools that improved from an "F" to a "C", and no middle schools that improved from an "F" to a "D".

Source: Florida Department of Education

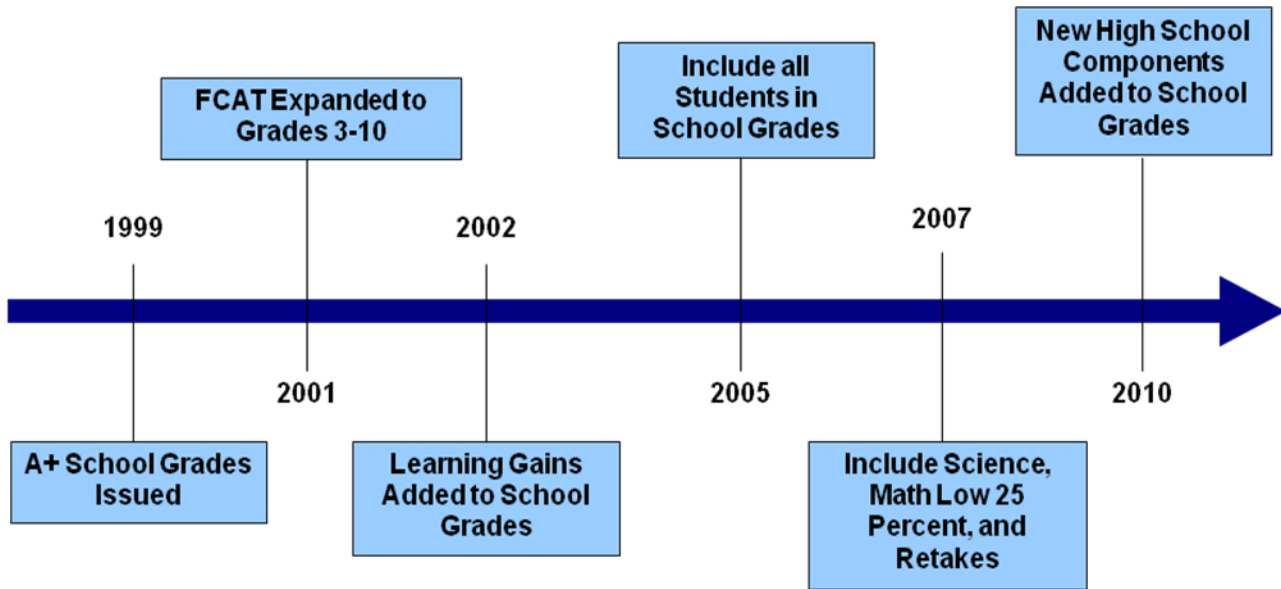
## 2010 Grades for 2009 “F” Schools – Elementary and Middle Schools



There were a total of 16 “F” elementary and middle schools in 2009. Of elementary and middle schools graded an “F” in 2009, 2 earned an “A”, 2 earned a “B”, 2 earned a “C”, 5 earned a “D”, and 2 earned an “F” in 2010. There were 3 “F” schools in 2009 that were not open in 2010.

Source: Florida Department of Education

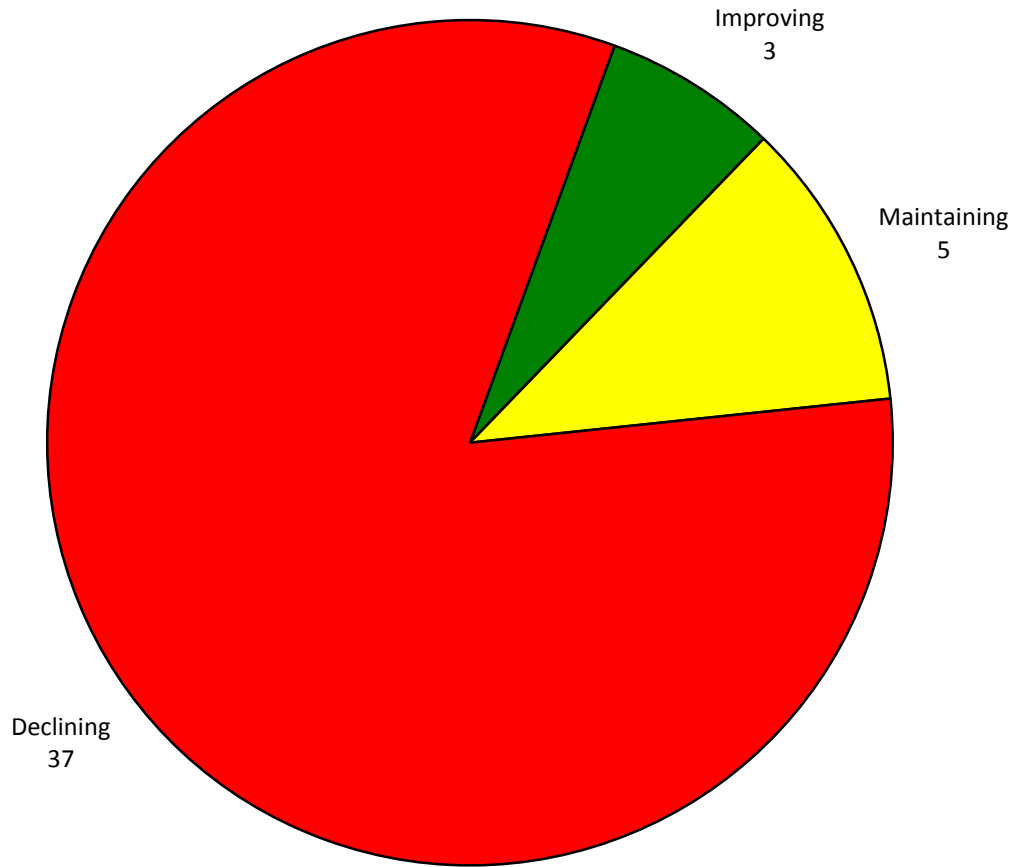
## History of School Grades



School Grades were first issued in 1999 under the A+ Plan for Education. Since then, school grading evolved in 2001 to include the FCAT results of students in Grades 3-10. In 2002, student learning gains were added to school grades, and in 2005 all students were included in school grades. In 2007, performance in FCAT Science, the learning gains of students scoring in the lowest 25 percent in mathematics, and the performance of those retaking the FCAT were added to school grades. In 2010, new components including graduation rate, student performance and participation in accelerated coursework, and college readiness will be added to school grades for high schools, to be released later this year.

Source: Florida Department of Education

## School Improvement Rating for Alternative Schools 2010

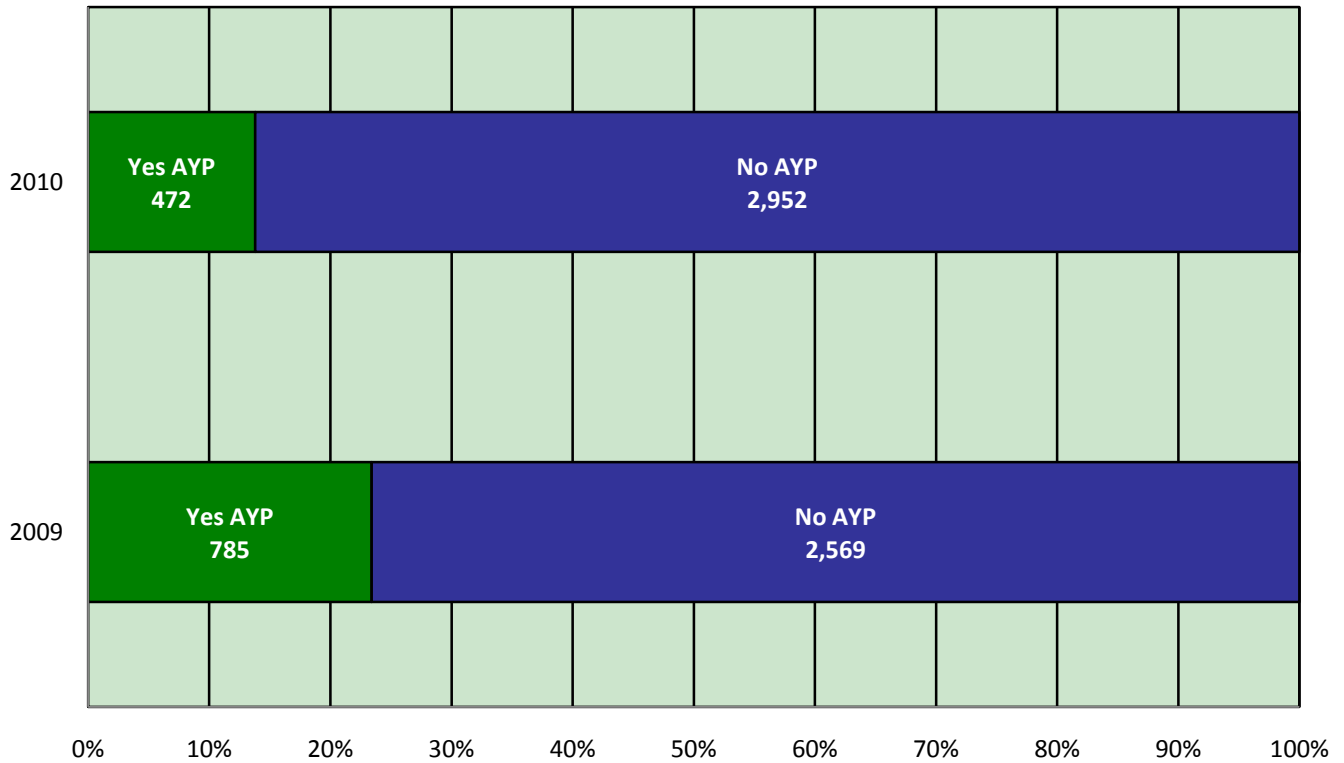


In 2010, 3 alternative schools earned an "Improving" rating; 5 alternative schools earned a "Maintaining" rating; and 37 alternative schools earned a "Declining" rating.

Source: Florida Department of Education

## 2010 vs. 2009

### No Child Left Behind Adequate Yearly Progress



In 2010, 472 schools (14 percent) made adequate yearly progress. This is a decrease from 785 schools, (23 percent) in 2009. In 2010, 2,967 schools (86 percent) did not make adequate yearly progress. That is an increase from 2,569 schools (77 percent) in 2009.

Source: Florida Department of Education

## 2010 School Grades\* Compared to AYP

A+ Plan		NCLB		
2010 School Grade	Schools	AYP Criteria Satisfied	Schools	Percent
<b>A</b>	1,399	<b>90% or more</b>	989	69%
<b>B</b>	491	<b>80% or more</b>	317	63%
<b>C</b>	495	<b>70% or more</b>	450	90%
<b>D</b>	101	<b>60% or more</b>	101	100%
<b>F</b>	41	<b>50% or more</b>	44	100%

In 2010, 1,399 schools\* earned an "A". Of these "A" schools, 989 satisfied at least 90 percent of the adequate yearly progress criteria. In 2010, there were 491 "B" schools\*. Of these "B" schools, 317 satisfied at least 80 percent of the adequate yearly progress criteria. In 2010, there were 495 "C" schools\*. Of these "C" schools, 450 satisfied at least 70 percent of the adequate yearly progress criteria. In 2010, there were 101 "D" schools. Of these "D" schools\*, 101 satisfied at least 60 percent of the adequate yearly progress criteria. In 2010, there were 44 "F" schools\*. Of these "F" schools, 44 satisfied at least 50 percent of the adequate yearly progress criteria.

\*School Grades only include elementary schools, middle schools, and combination schools that do not serve high school grade levels.

Source: Florida Department of Education

## School Grades by District

District Name	A	B	C	D	F
ALACHUA	16	10	5	4	0
BAKER	1	1	0	0	0
BAY	10	5	9	2	0
BRADFORD	1	1	3	0	0
BREVARD	70	4	2	1	0
BROWARD	132	33	35	8	5
CALHOUN	2	1	0	0	0
CHARLOTTE	10	5	0	0	0
CITRUS	13	2	0	0	0
CLAY	26	4	2	0	0
COLLIER	21	6	11	2	1
COLUMBIA	4	4	2	1	0
DADE	186	38	73	26	11
DESOTO	0	2	2	0	0
DIXIE	2	0	1	0	0
DUVAL	56	24	43	8	3
ESCAMBIA	11	11	19	4	1
FLAGLER	4	3	1	0	0
FRANKLIN	1	0	0	0	0
GADSDEN	4	1	3	1	2
GILCHRIST	1	1	0	0	0
GLADES	1	2	0	0	0
GULF	2	2	0	0	0
HAMILTON	0	0	1	1	1
HARDEE	1	2	2	1	0
HENDRY	1	5	2	0	0
HERNANDO	8	8	1	0	0
HIGHLANDS	3	4	6	0	0
HILLSBOROUGH	107	50	37	8	4
HOLMES	0	3	0	0	0
INDIAN RIVER	14	3	4	0	0
JACKSON	2	3	1	0	0
JEFFERSON	0	0	0	0	2
LAFAYETTE	0	1	0	0	0
LAKE	23	8	4	1	0
LEE	51	12	11	0	0
LEON	19	6	10	0	1
LEVY	4	2	2	0	0

## School Grades by District

District Name	A	B	C	D	F
LIBERTY	1	0	1	0	0
MADISON	1	1	0	1	1
MANATEE	16	11	17	4	2
MARION	19	11	8	1	1
MARTIN	12	3	2	0	0
MONROE	11	0	1	0	0
NASSAU	8	0	0	0	0
OKALOOSA	24	5	0	0	0
OKEECHOBEE	2	4	2	0	0
ORANGE	106	29	25	3	0
OSCEOLA	16	11	10	2	0
PALM BEACH	92	20	29	4	3
PASCO	24	24	16	1	0
PINELLAS	44	25	19	6	4
POLK	36	19	41	3	0
PUTNAM	3	3	5	3	0
ST. JOHNS	21	3	1	0	0
ST. LUCIE	13	10	7	1	0
SANTA ROSA	15	4	1	0	0
SARASOTA	31	5	4	1	0
SEMINOLE	40	9	1	0	0
SUMTER	4	1	0	0	0
SUWANNEE	1	0	2	0	0
TAYLOR	0	1	1	1	0
UNION	1	1	0	0	0
VOLUSIA	29	21	8	2	2
WAKULLA	7	0	0	0	0
WALTON	8	1	1	0	0
WASHINGTON	2	1	1	0	0
FAU LAB SCH	1	0	0	0	0
FSU LAB SCH	1	0	0	0	0
FAMU LAB SCH	0	0	0	0	0
UF LAB SCH	0	0	0	0	0
FL CONNECTIONS (CONTINUITY PROGRAM)	1	0	0	0	0
FL VIRTUAL ACADEMY (CONTINUITY PROGRAM)	1	0	0	0	0
VIRTUAL INSTRUCTION PROVIDERS (VIP)	1	1	0	0	0
STATE	1,399	491	495	101	44

## School Grades by District by Percent

District Name	A	B	C	D	F
ALACHUA	46%	29%	14%	11%	0%
BAKER	50%	50%	0%	0%	0%
BAY	38%	19%	35%	8%	0%
BRADFORD	20%	20%	60%	0%	0%
BREVARD	91%	5%	3%	1%	0%
BROWARD	62%	15%	16%	4%	2%
CALHOUN	67%	33%	0%	0%	0%
CHARLOTTE	67%	33%	0%	0%	0%
CITRUS	87%	13%	0%	0%	0%
CLAY	81%	13%	6%	0%	0%
COLLIER	51%	15%	27%	5%	2%
COLUMBIA	36%	36%	18%	9%	0%
DADE	56%	11%	22%	8%	3%
DESOTO	0%	50%	50%	0%	0%
DIXIE	67%	0%	33%	0%	0%
DUVAL	42%	18%	32%	6%	2%
ESCAMBIA	24%	24%	41%	9%	2%
FLAGLER	50%	38%	13%	0%	0%
FRANKLIN	100%	0%	0%	0%	0%
GADSDEN	36%	9%	27%	9%	18%
GILCHRIST	50%	50%	0%	0%	0%
GLADES	33%	67%	0%	0%	0%
GULF	50%	50%	0%	0%	0%
HAMILTON	0%	0%	33%	33%	33%
HARDEE	17%	33%	33%	17%	0%
HENDRY	13%	63%	25%	0%	0%
HERNANDO	47%	47%	6%	0%	0%
HIGHLANDS	23%	31%	46%	0%	0%
HILLSBOROUGH	52%	24%	18%	4%	2%
HOLMES	0%	100%	0%	0%	0%
INDIAN RIVER	67%	14%	19%	0%	0%
JACKSON	33%	50%	17%	0%	0%
JEFFERSON	0%	0%	0%	0%	100%
LAFAYETTE	0%	100%	0%	0%	0%
LAKE	64%	22%	11%	3%	0%
LEE	69%	16%	15%	0%	0%
LEON	53%	17%	28%	0%	3%
LEVY	50%	25%	25%	0%	0%

## School Grades by District

District Name	A	B	C	D	F
LIBERTY	50%	0%	50%	0%	0%
MADISON	25%	25%	0%	25%	25%
MANATEE	32%	22%	34%	8%	4%
MARION	48%	28%	20%	3%	3%
MARTIN	71%	18%	12%	0%	0%
MONROE	92%	0%	8%	0%	0%
NASSAU	100%	0%	0%	0%	0%
OKALOOSA	83%	17%	0%	0%	0%
KEECHOBEE	25%	50%	25%	0%	0%
ORANGE	65%	18%	15%	2%	0%
OSCEOLA	41%	28%	26%	5%	0%
PALM BEACH	62%	14%	20%	3%	2%
PASCO	37%	37%	25%	2%	0%
PINELLAS	45%	26%	19%	6%	4%
POLK	36%	19%	41%	3%	0%
PUTNAM	21%	21%	36%	21%	0%
ST. JOHNS	84%	12%	4%	0%	0%
ST. LUCIE	42%	32%	23%	3%	0%
SANTA ROSA	75%	20%	5%	0%	0%
SARASOTA	76%	12%	10%	2%	0%
SEMINOLE	80%	18%	2%	0%	0%
SUMTER	80%	20%	0%	0%	0%
SUWANNEE	33%	0%	67%	0%	0%
TAYLOR	0%	33%	33%	33%	0%
UNION	50%	50%	0%	0%	0%
VOLUSIA	47%	34%	13%	3%	3%
WAKULLA	100%	0%	0%	0%	0%
WALTON	80%	10%	10%	0%	0%
WASHINGTON	50%	25%	25%	0%	0%
FAU LAB SCH	100%	0%	0%	0%	0%
FSU LAB SCH	100%	0%	0%	0%	0%
FAMU LAB SCH	0%	0%	0%	0%	0%
UF LAB SCH	0%	0%	0%	0%	0%
FL CONNECTIONS (CONTINUITY PROGRAM)	100%	0%	0%	0%	0%
FL VIRTUAL ACADEMY (CONTINUITY PROGRAM)	100%	0%	0%	0%	0%
VIRTUAL INSTRUCTION PROVIDERS (VIP)	50%	50%	0%	0%	0%
STATE	55%	19%	20%	4%	2%



Florida Department of Education